

Half Yearly Examination 2024 – 2025

Time: 3:00 Hrs.

M.M. 70

Section - A

- Q.1 Which of the following is an invalid identifier to be used in Python?
(a) per%marks (b) For (c) While (d) true
- Q.2 What is the correct way to add an element to the end of a list in Python?
(a) list.add (element) (b) list.append (element)
(c) list.insert (element) (d) list.extend (element)
- Q.3 What will be the output of -
print ("Welcome To My Blog "[2:6] + "Welcome To My Blog "[5:9])
(a) Lcomme (b) lcomme T (c) lcomme To (d) lcomme
- Q.4 Which of the following statements is false?
(a) A try-except block can have more than one except statement
(b) One block of except statement cannot handle multiple exceptions
(c) The finally block is always executed
(d) When 1 == "1" is executed, no exception is raised
- Q.5 Which of the following statement(s) would give an error during the execution of the following code?
R = {'pno':52,'pname':'Virat', 'expert':['Badminton','Tennis'], 'score':(77,44)} print(R)
#Statement 1
R['expert'][0]='Cricket' #Statement 2
R['score'][0]=50 #Statement 3
R['pno']=50 #Statement 4
(a) Statement 1 (b) Statement 2 (c) Statement 3 (d) Statement 4
- Q.6 Which pickle module method is used to write a Python object to a binary file?
(a) save() (b) serialize() (c) store() (d) dump()
- Q.7 Given the following dictionaries :
dict_student = {"rno" : "53", "name" : "Rajveer Singh"} dict_marks = {"Accts" : 87, "English" : 65}
Which statement will append the contents of dict_marks in dict_student?
(a) dict_student + dict_marks (b) dict_student.add(dict_marks)
(c) dict_student.merge(dict_marks) (d) dict_student.update(dict_marks)
- Q.8 Which of the following is not a component of the math module in Python?
(a) ceil() (b) mean() (c) fabs() (d) pi
- Q.9 What will be the output of the following code?
L=["One , Two", "Three", "Four"]
print(len(L)/2*len(L[0]))
(a) 6.5 (b) 13 (c) 13.5 (d) 6.0

Q.10 Which of the following command is used to open a file “c:\temp.txt” in append-mode?

- A. outfile = open(“c:/temp.txt”, “a”)
- B. outfile = open(“c:\\temp.txt”, “rw”)
- C. outfile = open(“c:\\temp.txt”, “w+”)
- D. outfile = open(“c:\\temp.txt”, “r+”)
- E. outfile = open(“c:\\temp.txt”, “a”)

Q.11 Which SQL operator performs pattern matching?

- (a) BETWEEN operator (b) LIKE operator (c) EXISTS operator (d) =

Q.12 Which Python function is used for displaying only one result set from SQL table in a database?

- (a) fetch1() (b) fetchno() (c) fetchall() (d) fetchone()

Q.13 Which of the following file opening mode in Python, generates an error if the file does not exist?

- (a) a (b) r (c) w (d) w+

Q.14 The correct syntax of seek() is:

- (a) file_object.seek(offset [, reference_point]) (b) seek(offset [, reference_point])
(c) seek(offset, file_object) (d) seek.file_object(offset)

Q.15 Which of the following commands can be used to read “n” number of characters from a file using the file object <file>?

- A. file.read(n) B. n = file.read() C. file.readline(n) D. file.readlines()

Q.16 Which of the following commands can be used to write “n” number of characters from a file using the file object <file>?

- A. file.write(n) B. n = file.write() C. file.writeline(n) D. file.writelines()

Q.17 and 18 are ASSERTION AND REASONING based questions. Mark the correct choice as -

- (a) Both A and R are true and R is the correct explanation for A
(a) Both A and R are true and R is not the correct explanation for A
(b) A is True but R is False.
(c) A is false but R is True.

Q.17 **Assertion (A):** For changes made to a variable defined within a function to be visible outside the function, it should be declared as global.

Reasoning (R): Variables defined within a function are local to that function by default, unless explicitly specified with the global keyword.

Q.18 **Assertion (A):** A binary file in python is used to store collection objects like lists and dictionaries that can be later retrieved in their original form using pickle module.

Reasoning (A): Binary files are just like normal text files and can be read using a text editor like Notepad.

Section - B

14

Q.19 What is the difference between CHAR and VARCHAR ?

OR

What is the difference between fetchone() and fetchmany () methods with suitable examples?

Q.20 Rewrite the following code in Python after removing all the syntax errors. Underline each correction done in the code.

```
num1, num2 = 10, 45
While num1 % num2 == 0
num1+= 20
num2+= 30
else:
    print('hello')
```

Q.21 Write a function dispBook(BOOKS) in Python, that takes a dictionary BOOKS as an argument and displays the names in uppercase of those books whose name starts with a consonant.

For example, Consider the following dictionary

BOOKS = {1:"Python", 2:"Internet Fundamentals ", 3:"Networking ", 4:"Oracle sets", 5:"Understanding HTML"}

The output should be:

PYTHON NETWORKING

OR

Write a Python Program containing a function FindWord(String, SEARCH), that accepts two arguments : STRING and SEARCH, and prints the count of occurrence of SEARCH in STRING. Write appropriate statements to call the function.

For example, if STRING = "Learning history helps to know about history with interest in history" and SEARCH= 'history', the function should display

Q.22 What will be the output of the following code?

```
L = [5,10,15,1]
```

```
G = 4
```

```
def Change(X): global G N=len(X)
```

```
for i in range(N):
```

```
    X[i] += G
```

Change(L) for i in L:

```
print(i,end='$')
```

Q.23 Write a suitable Python statement for each of the following tasks using built-in functions/methods only:

(i) To delete an element Mumbai:50 from Dictionary D.

(ii) To display words in a string S in the form of a list

OR

Write a Python Program to display alternate characters of a string

my_str.

For example, if my_str= "Computer Science" The output should be Cmue cec

Q.24 Differentiate between % (percentage) and _(underscore) characters used with the LIKE operator in SQL with appropriate examples.

OR

Differentiate between DROP and DELETE commands in SQL with appropriate examples.

Q.25 Consider the following two commands with reference to a table, named Employee having a column named *Department*:

(a) Select count(Department) from Employee;

(b) Select count(*) from Employee;

If these two commands are producing different results,

(i) What may be the possible reason?

(ii) Which command (a) or (b) might be giving a higher value?

Section – C

15

Q.26 (a) Consider the table, BOOK and MEMBER given below:

TABLE: BOOK

CODE B	NAME	TYPE
F101	The priest	Fiction
L102	Easy Python	Programming
C101	Juman Ji	Thriller
F102	Untold Story	Fiction
C102	War Stories	Comic

Table: MEMBER

MNO	MNAME	CODE	ISSUEDATE
M101	SNEH SINHA	L102	2022-10-13
M103	SARTHAK	F102	2021-02-23
M102	SARA KHAN	C101	2022-06-12

What will be the output of the following statement?

SELECT * FROM BOOK NATURAL JOIN MEMBER;

(b) Write the output of the queries (i) to (iv) based on the table

Table: Employee

EID	Name	DOB	DOJ	Salary	Project
E01	Ranjan	1990-07-12	2015-01-21	150000	P01
E02	Akhtar	1992-06-21	2015-02-01	125000	P04
E03	Muneera	1996-11-15	2018-08-19	135000	P01
E04	Alex	1991-10-25	2018-10-19	75000	P02
E05	Satyansh	1993-12-16	2018-10-19	85000	P04

(i) SELECT NAME, PROJECT FROM EMPLOYEE ORDER BY NAME DESC;

(ii) SELECT NAME, SALARY FROM EMPLOYEE WHERE NAME LIKE 'A%';

(iii) SELECT NAME, DOJ FROM EMPLOYEE WHERE SALARY BETWEEN 100000 AND 200000;

(iv) SELECT * FROM EMPLOYEE WHERE PROJECT = 'P01';

Q.27 Consider the following tables – FACULTY and COURSES:

Table: FACULTY

FID	FNAME	LNAME	JOINDATE	SALARY
F01	Anishma	Garg	2000-12-14	32000
F03	Bhumi	Goel	2001-08-10	15000
F04	Neha	Verma	2000-05-17	27000
F05	Meenu	Sharma	2006-07-11	30000

Table: COURSES

C_ID	FID	CNAME	FEES
C11	F01	Grid Computing	40000
C12	F04	Python	17000
C13	F03	C++	8000
C14	F04	Computer Network	15000
C15	F01	HTML	12000
C16	F05	Data Science	NULL

What will be the output of the following statement?

(i) SELECT FID, MIN(FEES), MAX(FEES) FROM COURSES GROUP BY FID;

(ii) SELECT AVG(SALARY) FROM FACULTY WHERE FNAME LIKE '%A';

(iii) SELECT FNAME, CNAME FROM FACULTY F, COURSES C WHERE F.FID=C.FID AND COURSES.FID='F04';

(iv) SELECT FNAME, CNAME, FEES FROM FACULTY F, COURSES C WHERE F.FID = C.FID AND FEE>15000;

(v) Write the name of the command to display the structure of a table in a database.

Q.28 Write a function COUNT() in Python to read from a text file 'Gratitude.txt' and display the count of the letter 'e' in each line

Example: If the file content is as follows

Gratitude is a humble heart's radiant glow,
A timeless gift that nurtures and bestows.
It's the appreciation for the love we're shown, In moments big and small, it's truly known.

The COUNT() function should display the output as:

Line 1 : 3

Line 2 : 4

Line 3 : 6

Line 4 : 1

OR

Write a function `Start_with_I()` in Python, which should read a text file 'Gratitude.txt' and then display lines starting with 'I'. Example: If the file content is as follows:

Gratitude is a humble heart's radiant glow,
A timeless gift that nurtures and bestows.
It's the appreciation for the love we're shown, In
moments big and small, it's truly known.

Then the output should be It's the appreciation for the love we're shown, In moments big and small, it's truly known.

- Q.29 Navdeep creates a table **RESULT** with a set of records to maintain the marks secured by students in Sem1, Sem2, Sem3, and their divisions. After the creation of the table, he entered data of 7 students in the table.

ADNO	ROLLNO	SNAME	SEM1	SEM2	DIVISION
123	101	KARAN	366	410	I
245	102	NAMAN	300	350	I
128	103	ISHA	400	410	I
129	104	RENU	350	357	I
234	105	ARPIT	100	75	IV
187	106	SABINA	100	205	II
181	107	NEELAM	470	450	I

Based on the data given above answer the following questions:

- Identify the columns which can be considered as candidate keys?
- If 2 more columns are added and 3 rows are deleted from the table result, what will be the new degree and cardinality of the above table?
- Write a statement to increase the SEM2 marks by 3% for the students securing marks between 70 to 100.

- Q.30 Write a program to perform Stack all operation?

Section – D

8

- Q.31 Create a function `maxsalary()` in Python to read all the records from an already existing file `record.csv` which stores the records of various employees working in a department. Data is stored under various fields as shown below:

E_code	E_name	Scale	Salary
A01	Bijesh Mehra	S4	65400
B02	Vikram Goel	S3	60000
C09	Suraj Mehta	S2	45300
.....

Function should display the row where the salary is maximum.

Note: Assume that all employees have distinct salary

- Q.32 Consider a binary file 'INVENTORY.DAT' that stores information about products using tuple with the structure (ProductID, ProductName, Quantity, Price). Write a Python function `expensiveProducts()` to read the contents of 'INVENTORY.DAT' and display details of products with a price higher than Rs. 1000. Additionally, calculate and display the total count of such expensive products

For example: If the file stores the following data in binary format

(1, 'ABC', 100, 5000)

(2, 'DEF', 250, 1000)

(3, 'GHI', 300, 2000)

then the function should display

Product ID: 1

Product ID: 3

Total expensive products: 2

Section-E (15 Marks)

Q.33 Write the steps to perform an insert query in database connectivity application.

Table 'Student' values are rollno ,name ,age(10,'Neha' ,26)

Q.34 (1) Mention any two differences between seek() and tell().

(2) Consider a file FLIGHT.DAT containing multiple records. The structure of each record is as shown below:

[Fno, FName, Fare, Source, Destination]

Write a function COPY_REC() in Python that copies all those records from FLIGHT.DAT where the source is DELHI and the destination is MUMBAI, into a new file RECORD.DAT

OR

(i) Mention any two differences between binary files and csv files?

(ii) Consider a Binary file BOOK.DAT containing a dictionary having multiple elements. Each element is in the form BNO:[BNAME,BTYPE,PRICE] as key:value pair where BNO– Book Number BNAME– Book Name BTYPE- Book Type PRICE– Book price. Write a user-defined function, findBook(price), that accepts price as parameter and displays all those records from the binary file BOOK.DAT which has a book price more than or equal to the price value passed as a parameter.

Q.35 (1) Define the term constraint with respect to RDBMS. Give a suitable example.

(2) Sameera maintains a database named STORE which contains a table named ITEM with the structure given below:

- Ino(Item number)- integer
- Iname(Item Name) – string
- Price(Item Price) – float
- Discount(Discount) – float

Note the following to establish connectivity between Python and MySQL:

- Username - root
- Password - tiger
- Host - localhost

Help her to remove the record from the table ITEM for a particular value of item name input by the user.

```
import mysql.connector as mysql
```

```
con1= mysql.connect(host='localhost', user='root',  
password= '_', database='STORE') #Statement-1
```

```
mycursor = #Statement-2
```

```
item_name = input("Enter the Item name to remove the record : ") query = __
```

```
#Statement-3
```

```
mycursor.execute(query)
```

```
con1._____ #Statement-4 print('Data Deleted  
successfully') con1.close()
```

With reference to the above code, answer the following questions

- (a) Complete statement 1 to establish the connection with the database.
- (b) Write statement 2 to create the cursor object.
- (c) Complete statement 3 to remove the record from the table ITEM based on the item name entered by the user
- (d) Complete statement 4 to save the changes in the table.

OR

- (i) Write one difference between the alternate key and the candidate key.
- (ii) A table named ITEM is created in a database STORE. The table contains multiple columns whose details are as shown below:

- Ino(Item number)- integer
- Iname(Item Name) – string
- Price(Item Price) – float
- Discount(Discount) – float

Note the following to establish connectivity between Python and MySQL:

- Username - root
- Password - tiger
- Host - localhost

However, the table is to be interfaced with Python to perform certain tasks. The incomplete code is given below:

```
_____ #Line 1
```

```
con1= mysql.connect(host='localhost', user = 'root', password = 'tiger',  
database='STORE')
```

```
mycursor = con1.____ #Line 2
```

```
query = 'SELECT * FROM ITEM where Price > {}'.format(____) #Line3
```

```
mycursor.execute(query)
```

```
data = mycursor.____ #Line 4 for rec in data:
```

```
print(rec) con1.close()
```

- (i) Complete line 1 to import the appropriate module.
- (ii) Complete Line 2 to create the cursor object
- (iii) Complete the query given in Line 3 to display details of all such items from the table ITEMS whose price is more than 5000.
Complete Line 4 to extract all the records.

Roll No. _____ NLCS/12/Painting(049)/22
Half Yearly Examination 2024 – 2025
Time - 1:30 Hrs. M.M.30

Section - A

Multiple Choice Questions- 1×8=8

- Q.1 Kalpasutra and Kalkacharya Katha the painted manuscripts of which of the following schools ?
(a) Pala school (b) Deccan school (c) Jain school (d) Pahari school.
- Q.2 Pahari style was mainly influenced by-
(a) Mughal style a Rajasthani style
(b) Worldly style (Sansarikaishwarye)
(c) Inspired by luxury
(d) Bengal style
- Q.3 Which Persian artist was known as the "Raphael of the East"?
(a) Mir Syed Ali (b) Bihzad (c) Ustad Mansoor (d) Abdus Samad
- Q.4 Which ruler/patron wrote Naurasnama?
(a) Hussain Nizam Shah (b) Ibrahim II of Bijapur
(c) Ali Adil Shah (d) Abdullah Qutub Shah
- Q.5. This painting is one of the illustrations from harivamsa the genealogy of Hari (Krishna).
(a) Krishna lifting mount Goverdhana
(b) Kabir and Raidas
(c) Falcon on a rest
(d) Marriage Procession of Dara Sikoh
- Q.6 Mewar style paintings have a Colour scheme
(a) Sufiyan (b) Blurred (c) Flashy (d) Mixed

Note : There are two of Q. No. 7 and 8 are two statements marked as Assertion (A) and Reason (R). Mark your answer as per the codes provided below.

- (i) Both A and R are true and R is the correct explanation of A
(ii) Both A and R are true but R is not the correct explanation of A
(iii) A is true but R is false
(iv) A is false but R is true.

Assertion (A): Ragmala paintings are the depictions of Ragas and Raginis in beautiful calligraphy.

Reason (R) : The beauty of nature is used to enhance the impact of Bhava emotion in different Ragmalas.

Q.8 **Assertion (A):** Rajasthani Chaugan players has radial balance with the ball as the centre.

Reason (R) : Deccani Chaugan players has formal balance as the right and left sides of the paintings are similar and symmetrical.

Ans in 100 words : 2×5=10

Q.9 Why do you like or dislike the Rajasthani miniatures. Give reasons in short.

OR

Mention the names of any four Rajasthani paintings with their artist.

Q.10 Mention the title of any 5 miniature paintings of the Pahari School included in the course of your study, which you like the most.

OR

Write a short note on the Mughal painting Marriage procession of Dara Shikoh.

Q.11 Write a short on the Compositional arrangement of following paintings: Radha Bani - Thani **OR** Maru-Ragin

Q.12 How far has the painter been successfully depicting the subject matter of Deccani Painting : Chand Bibi Playing Polo (Chaugan)

OR

Describe the main features of the Mughal School of miniature paintings (any 5)

Q.13 Write a short note on the colour scheme of the following paintings: Bharat meets Rama at Chitrakuta

OR

Krishna lifting mount Govardhana.

Ans in 200 words.: 6×2=12

Q.14 Appreciate any one Rajasthani painting included in your course of study based on the following points

- (i) Title and name of the painter (ii) Medium and technique
(iii) Subject matter (iv) Compositional arrangement

OR

Q.15 Write an essay on the origin and development of the Mughal School.

OR

Q.16 Do you receive any spiritual message from the famous miniature painting of Hazrat Nizamuddin Aaliya and Amir Khusro? Explain.

General Instructions

Read the following instructions very carefully and strictly follow them :

- (i) The question paper consists of 5 sections and 37 questions.
 - (ii) Section A consists of questions 1-18 carrying 1 mark each and are multiple choice question. All questions are compulsory.
 - (iii) Section B consists of questions 19-24 carrying 2 marks each and are very short answer types and should not exceed 60-90 words. **Attempt any 5.**
 - (iv) Section C consists of questions 25-30 carrying 3 marks each and are short answer types And Should not exceed 100-150 words. **Attempt any 5.**
 - (v) Section D consists of questions 31-33 carrying 4 marks each and are case studies based. **There is Internal choice in them.**
- Section E consists of questions 34-37 carrying 5 marks each and are short answer type and should not exceed 200-300 words. **Attempt any 3.**

Section A

Q.1 Identify the asana :

- (a) Halasana (b) dhanurasana
- (c) chakrasna (d) bhujangasana



Q.2 First Deaflympic games was organized in the year :

- (a) 1896 (b) 1960 (c) 1924 (d) 1951

Q.3 What is the function of the protein as a nutrient?

- (a) Does not carry oxygen and haemoglobin to all parts of the body
- (b) Growth of organs and development of new Tissues
- (c) Required for metabolism
- (d) Prevents skin from being rough

Q.4 Which of the following 'jumps' in track and field athletics is not best described biomechanically by the phases of run-up, take-off, flight, landing?

- (a) The long jump (b) The pole vault (c) The High jump (d) Hurdle clearance

Q.5 Assertion- Nutrition can be defined as the science of taking nutrients.

Reason - It is dynamic process which helps to maintain , growth , reproduction, health, and disease of an organism.

Which of the following statement is true?

- (a) Both A and R are true and R is the correct explanation of A
- (b) Both A and R are true and but R is not a correct explanation of A
- (c) A is true but R is false
- (d) A is false, but R is true

Q.6 The following food components don't produce heat and energy in body

- (I) protein (II) vitamin (III) fat (IV) minerals
- (a) I and III (b) II and III (c) III and IV (d) II and IV

Q.7 Which of the following would have the least effect on :
muscle anaerobic capacity?

- (a) Resting muscle glycogen concentration correct
- (b) Muscle buffering capacity
- (c) Muscle glycolysis enzyme activity wrong
- (d) Resting muscle PCR concentration

Q.8 Which activity would best demonstrates Newton's law of inertia?

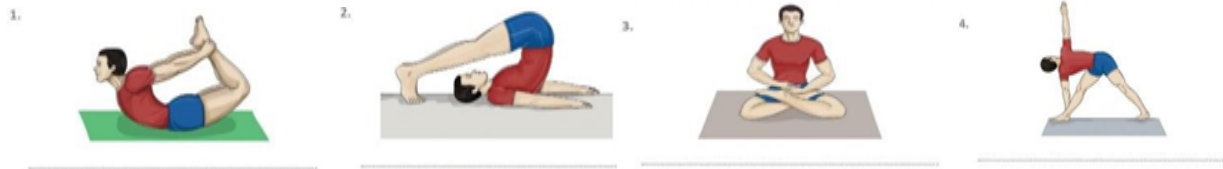


- (a) a plate on a table top
 - (b) a lady pushing a grocery cart
 - (c) a child jumping on a trampoline
 - (d) a boy swings a baseball bat
- Q.9 Riboflavin is known as :
- (a) Vitamin B2
 - (b) Vitamin B6
 - (c) Vitamin B12
 - (d) Vitamin B5
- Q.10 Which of the following is not the factor affecting projectile trajectory?
- (a) Gravity
 - (b) Angle of release
 - (c) Buoyant force
 - (d) Air resistance
- Q.11 Constituents of carbohydrate are ----- .
- (a) Carbon, nitrogen, oxygen
 - (b) Nitrogen, oxygen, hydrogen
 - (c) Hydrogen, carbon, oxygen
 - (d) Hydrogen, carbon, nitrogen
- Q.12 What is Amenorrhoea?
- (a) Delayed menarche
 - (b) stops menstruating for ninety days or more
 - (c) Both a and b
 - (d) None of the above
- Q.13 Which type of coordinative ability is required in games like judo and wrestling?
- (a) orientation ability
 - (b) adaption ability
 - (c) coupling ability
 - (d) differentiation ability
- Q.14 How many byes will be given if there 27 teams?
- (a) 11
 - (b) 9
 - (c) 7
 - (d) 5
- Q.15 The principal of the school during his address at the start of the academic year announced that the new school curriculum includes the language and culture of the disadvantage and marginalised groups in school.
- What is the principle of school is trying to ensure?
- (a) Equality education
 - (b) Equity in education
 - (c) sympathy for the unprevailed groups
 - (d) vocational education specially for unprevailed groups
- Q.16 Which one of the following is remedial exercise for flat foot?
- (a) walking on toes
 - (b) holding pebbles with toes
 - (c) heel raise
 - (d) all of these
- Q.17 Flexibility is determined by the elasticity of muscles, tendons and ----- .
- (a) cell
 - (b) skin
 - (c) Ligaments
 - (d) tissue
- Q.18 Select the deformity in which chest muscles are contracted -----.
- (a) kyphosis
 - (b) lordosis
 - (c) scoliosis
 - (d) round shoulder

Section B

- Q.19 Write physiological factors determining Endurance.
- Q.20 Write down four food myths about dieting.
- Q.21 What are fats ? Write a detailed notes on its types . Also mention its importance in proper functioning of the body.
- Q.22 What are the factors affecting projectile in sports.

Q.23 Identify the following asana and write the name of the postural deformity that it is helpful in treating:



Q.24 What is Strength? Explain its types.

Section C

Q.25 Draw fixture of 11 teams for knock-out tournament with all the necessary formulas.

Q.26 How cardio-respiratory system is effected by exercises?

Q.27 Elucidate any six affects of exercise on muscular system.

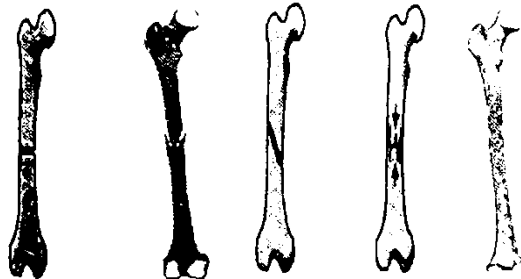
Q.28 Discuss the strategies to make physical activities assessable for CWSN.

Q.29 Why are proteins necessary for the body?

Q.30 What is female athlete triad? Explain in detail.

Section D

Q.31 Adam was injured while playing cricket. He was taken to hospital. In the doctor's room, he saw the following picture related to a fracture.



On the basis of the given picture answer the following.

(A) When the two ends of the bone enter into each other it is _____

(B) ----- is a slanted fracture

(C) When the bone is broken into many pieces at one place or different places , it is called ----- .

(D) ----- is a fracture in which bone gets bent.

OR

----- fracture occurs in s straight line at a right angle to the shaft of the bone.

Usually caused by direct blow

Q.32 With the aim of promoting physical fitness and healthy lifestyle amongst students the The Physical education Teacher at XYZ School plans to organize intramural competitions at school. For conducting the event he has given this assignment to the students of class XII who have taken up Physical Education subject so that they can get first hand experience of organizing events. On the basis of given information answer the following questions:

(i) The work of committees is divided into ----- .

(a) Pre, during and post (b) Pre and post (c) Pre and during (d) During and Post

(ii) Match the following

(a) Technical committee

(i) To provide shifting facility

(b) Finance committee

(ii) To resolve dispute

(c) Transport committee

(iii) To deals with money and expenditure

(d) First aid committee

(iv) To provide medical facility

(a) a–ii, b–iii, c–i, d–iv

(b) a–iii, b–ii, c–i, d–iv

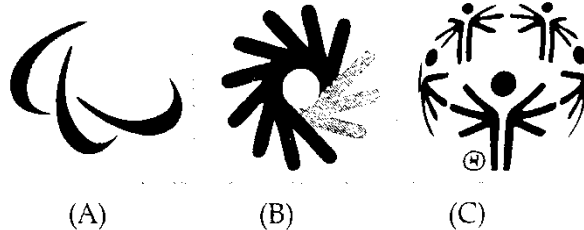
(c) a–ii, b–iii, c–iv, d–I

(d) a–iv, b–iii, c–i, d–ii

- (iii) Which is not the objective of a Sports Tournament?
 (a) To Provide Recreation (b) To help in overall development
 (c) To achieve high performance (d) To provide opportunity.
- (iv) The committee responsible for liaison and print media
 (a) technical (b) logistics (c) marketing (d) finance

Q.33 In relation to the pictures, answer the following questions-

- (i) Logo shown in picture ----- refers to Special Olympic.



- (ii) Who was the founder of Special Olympics?
 (iii) According to figure B the hand shape 'OK', 'Good' and 'Great' that overlap each other in a circle, represent the original sign for -----.
 (iv) How many countries participated in the first Paralympic Games in Rome (Italy) in 1960?

OR

The Motto of the Paralympic is _____.

Section E

- Q.34 What are the types of diabetes? Discuss the asanas helpful for a person suffering from it and write down the procedure for gomukhasana.
- Q.35 Make a table of Test items listed under fitness test by SAI (age group 9-18) . Explain the procedure and scoring of any two.
- Q.36 Draw a knockout fixture of 21 teams mentioning all the steps involved.
- Q.37 Define trajectory. Describe the factors affecting trajectory.
