

Half Yearly Examination 2024 – 2025**Time - 3:00 Hrs.****M.M. 70****General Instruction:**

- (i) All questions are compulsory.
- (ii) The question paper has five sections and 33 questions. All questions are compulsory.
- (iii) Section–A has 16 questions of 1 mark each; Section–B has 5 questions of 2 marks each; Section–C has 7 questions of 3 marks each; Section–D has 2 case-based questions of 4 marks each; and Section–E has 3 questions of 5 marks each.
- (iv) There is no overall choice. However, internal choices have been provided in some questions. A student has to attempt only one of the alternatives in such questions.
- (v) Wherever necessary, neat and properly labelled diagrams should be drawn.

Section - A

- Q.1 Embryo Sac is to ovule as ----- is to an anther.
(a) Stamen (b) filament (c) pollen grain (d) Androecium
- Q.2 ZZ/ ZW type of sex determination is seen in:
(a) Platypus (b) snails (c) cockroach (d) Peacock
- Q.3 A nucleoside differs from a nucleotide because it lacks the :
(a) Base (b) sugar (c) phosphate Group (d) hydroxyl group
- Q.4 Identify the odd one out :
(a) Libia minora (b) fimbriae (c) infundibulum (d) isthmus
- Q.5 C - peptide of human insulin is:
(a) a part of mature insulin molecule
(b) responsible for formation of disulfide bridges
(c) removed during maturation of pro insulin to insulin
(d) responsible for its biological activity.
- Q.6 Person having genotype $I^A I^B$ would show the blood group as AB this is because of :
(a) pleiotropy (b) codominance (c) segregation (d) incomplete dominance
- Q.7 The finches of Galapagos islands provide evidence in favour of :
(a) special creation (b) evolution due to mutation
(c) retrogressive evolution (d) biogeographical evolution
- Q.8 Antibodies present in cholesterol which protects the newborn from certain diseases is of
(a) IgG type (b) IgA type (c) IgDtype (d) IgE type
- Q.9 AIDS is caused by HIV. among the following which one is not a mode of transmission of HIV?
(a) transfusion of contaminated blood (b) sharing of infected needles

(c) shaking hands with infected persons (d) sexual contact with infected person

Q.10 Paleontological evidence for evolution refers to the:

(a) development of embryo (b) fossils (c) homologous organs (d) analogous organs

Q.11 A common biocontrol agent for the control of plant disease is :

(a) Baculovirus (b) bacillus thuringiensis (c) glomus (d) trichoderma

Q.12 Given below is a sample of a portion of DNA strand giving the base sequence on the opposite strand what is so special shown in it.

5' _____ GAATTC _____ 3'
3' _____ CTTAAG _____ 5'

(a) Replication complete (b) start codon at the 5' level

(c) deletion mutation (d) palindromic sequence

Question 13 to 16 are assertion reasons questions.

Answer these question by selecting instructions given below:

(a) Both A&R are true and R is the correct explanation of A

(b) Both A&R are true and R is not the correct explanation of A

(c) A is true but R is false

(d) A is false but R is true

Q.13 Assertion : The angiosperms of endosperm is generally triploid

Reason : It develops from PEN formed by fusion of haploid male gamete and diploid secondary nucleus.

Q.14 Assertion : ABO blood group system is a good example of pleiotropic genes.

Reason: In ABO blood group system where I^A and I^B alleles are present together both express themselves

Q.15 Assertion: mRNA attaches to ribosome through its 5 end.

Reason : The mRNA has bases of lagging sequence.

Q.16 Assertion: Plasmids are extra chromosomal DNA

Reason : Plasmids are found in bacteria and useful in genetic engineering.

Section – B

Q.17 Discuss the role of enzymes DNA ligase plays during DNA replication.

Q.18 Draw a diagram of structure of nucleosome.

Q.19 List all the post fertilization events in angiosperms.

Q.20 Write the functions of the: (i) acrosome (ii) sperm tail

Q.21 A child has blood group O if the father has blood Group A and mother has blood Group B, work out the genotype of the parents and the possible genotype of the offsprings

OR

Name a human genetic disorder due to following :

(i) an additional X chromosome in a males (ii) deletion of one X chromosome in a female

Section – C

- Q.22 Explain the phases in embryonic development from morula stage till the establishment of pregnancy in a human female.
- Q.23 Write the causes and symptoms of the following diseases.
(a) Down syndrome (b) sickle cell anaemia (c) phenylketonuria
- Q.24 Differentiate between the following :
(a) phenotype and genotype (b) monohybrid and dihybrid cross (c) dominance and recessive
- Q.25 (a) On which strain of bacteria did Griffith worked.
(b) State the contribution of MacLeod McCarty and Avery.
(c) Define transformation in Griffith experiment.
- Q.26 How does industrial melanism support Darwin's theory of natural selection?
- Q.27 Show the well labeled life cycle of plasmodium.

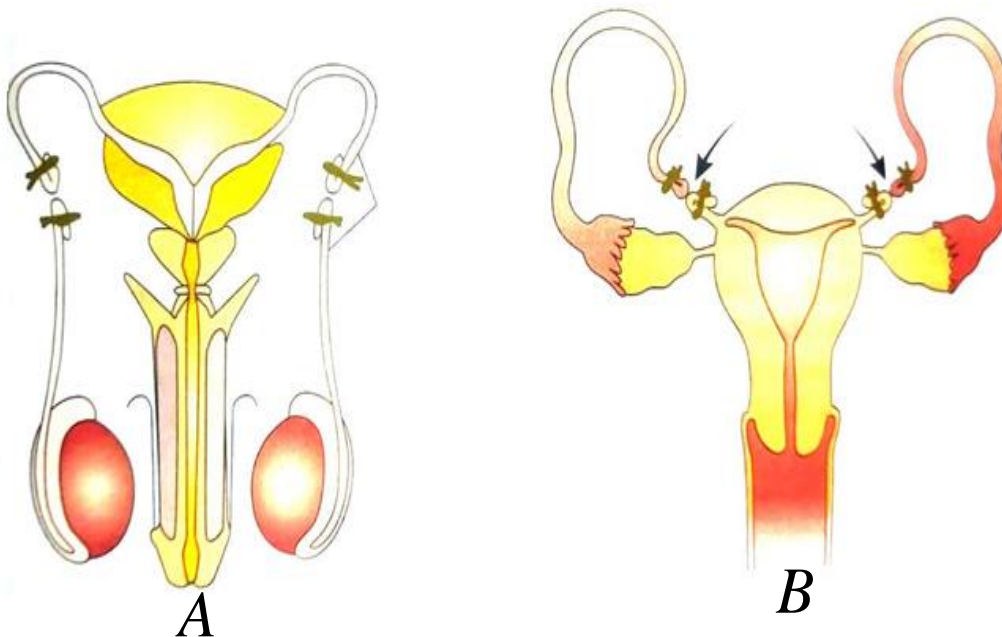
OR

Write a short note on cancer including characters, types and causes

- Q.28 Write three difference between DNA & RNA.

Section – D

- Q.29 Study the diagram of reproductive system below, answer the question based on the diagram.



- (i) What does the diagram A depict :
(a) Vasectomy (b) Tubectomy (c) Fertilization (d) Pollination
- (ii) At what stage zygote can be introduced in the fallopian tube in zygote intrafallopian transfer (ZIFT)
(a) 2 celled stage (b) 8 celled stage (c) 6 celled stage (d) 9 celled stage
- (iii) Two events that are inhibited by the intake of oral contraceptive pills to prevent pregnancy in humans.
(a) Fusion & Fertilization (b) Ovulation & Implantation

- (c) Gametogenesis & Ovulation (d) Oogenesis & spermatogenesis
- (iv) An ----- connects placenta with the embryo that helps in the transport of substance.
- (a) Umbilical cord (b) Placental villi (c) Yolk sac (d) None of these

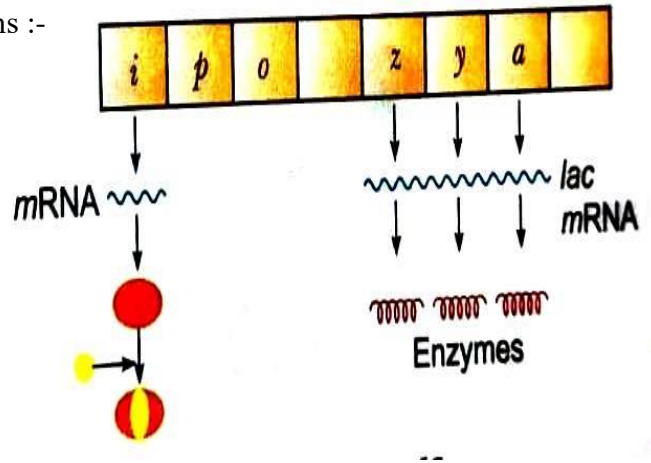
OR

Funnel shape structure diagram B represent :

- (a) Fimbriae (b) Ovary (c) Infundibulum (d) Ampulla

Q.30 Study the figure given below and answer the questions :-

- (i) What does O stands for :
- (a) Operator (b) Operation
(c) Ozone (d) None of above
- (ii) Name the inducer used in lac operon :
- (a) Tryptophan (b) Lactose
(c) Glucose (d) None of these
- (iii) Name the enzyme transcribed by the gene Z.
- (a) β -galactosidase (b) Permease (c) Transacetylase (d) Ligase
- (iv) Lac operon concept was first proposed by :
- (a) Monod (b) Jacob (c) Jacob & Monod (d) Griffith



OR

Which gene codes for repressor protein that binds to the operator & suppresses its activity as a result transcription will be switch off :

- (a) Regulator gene (b) Structural gene (c) Promotor (d) Operator

Section – E

Q.31 Explain the interpretation of Charles Darwin when he observed a variety of small black birds on Galapagos islands

OR

What is disturbance in Hardy Weinberg genetic equilibrium indicative of ? Explain how it is caused?

Q.32 Explain the role of following in increasing the soil fertility and crop yield:

- (a) (i) leguminous plants (ii) cyanobacteria (iii) mycorrhiza
(b) List the components of biogas

OR

Given below is a list of five microorganism state their usefulness into humans

- (i) saccharomyces cerevisiae (ii) trichoderma Poly sporum (iii) penicillium notatum
(iv) Monascus purpureus (v) nucleopolyhedrovirus

Q.33 Trace all this steps of DNA fingerprinting with diagram.

OR

(a) Explain transcription in Eukaryotes with diagram.

(b) A DNA segment has total of 1500 nucleotides, out of which 410 are guanine containing nucleotides. How many pyrimidine bases this DNA segment possesses?

Half Yearly Examination 2024 - 2025**Time: 3:00 Hrs.****M.M. 80****SECTION A: READING (22 Marks)****Q.1 Read the passage given below:****10**

1. This is the largest Malay house on the peninsula. It is built of wood painted green and white, with bold floral designs on a white background around some of the circular windows and a very large porch for followers to wait in, up a ladder of course.
2. Really the upper class of Malay houses show some very good work. The thatch of the steep roof is beautifully put on and between the sides of finely woven checked matting interspersed with lattice work and bamboo work, the shady inner rooms with their carved doorways and portieres of red silk, the pillows and cushions of gold embroidery laid over the exquisitely fine matting on the floors, the light from the half-shaded windows glancing here and there as the breeze sways the screens, there is an indescribable appropriateness to the region.
3. I waited for the elephant in a rambling empty house and Malays brought pierced coconuts, buffalo milk and a great bouquet of lotus blossoms and seed-vessels, out of which they took the seeds and presented them on the grand lotus leaf itself.
Each seed is in appearance and taste like a hazel-nut, but in the centre, in an oval slit, the future lotus plant is folded up, the one vivid green seed leaf being folded over a shoot and this is intensely bitter.
4. The elephant at last came up and was brought below the porch of the house. They are truly ugly beasts, with their grey wrinkled, hairless hides, the huge ragged 'flappers' which cover their ears and with which they fan themselves ceaselessly, the small mean eyes, the hideous trunk which coils itself snakishly round everything, the formless legs, the piggish back, with the steep slope down to the mean, bare tail, features so unlike any other familiar and friendly beast.
5. Before I came out from England, I dreamt of howdahs and cloth-of-gold trappings, but my elephant had neither. In fact there was nothing grand about him but his ugliness. I dropped into one of two baskets on either side of his back from the porch, a young Malay lad dropped into the other and my bag was tied on behind with more ropes.
6. My ride was not comfortable. One sits facing forwards with the feet dangling over the edge of the basket. This edge soon produces a sharp ache or cramp and, when one tries to get relief by leaning back on anything, the awkward rolling position is so painful that one reverts to the former position till it again becomes intolerable.
7. After we had travelled two hours, the baskets slipped down very dangerously and needed adjustment. We were forced to dismount while the pack was adjusted. Then, while the elephant was still sitting, the driver jumped on the elephant's back and giving me his hands hauled me up over the head, after which the creature rose gently from the ground and we went on our journey.
8. Soon the driver abandoned the elephant for a gossip and a smoke, leaving the animal to go its own way for a mile or more. The elephant turned into the jungle, where he began to rend and tear the trees and going to a mud-hole, he drew what water there was out of it and squirted it with a loud noise over himself and his riders, soaking my clothes with it. When he turned back to the road again, he several times stopped and seemed to stand on his head by stiffening his trunk and leaning upon it and when I hit him with my umbrella he uttered the loudest roar I ever heard. My Malay fellow-rider jumped off and ran back for the driver, at which the baskets both came down on my side of the elephant.
9. On the driver's return I had to dismount again and this time the elephant was allowed to go and take a proper bath in a river. He threw large quantities of clear water over himself and took up plenty more with which to cool his sides as went along. Thick as the wrinkled hide of an elephant is, a very small insect can still draw blood from it and so, like the water buffalo, he wisely plastered himself with mud from the river's edge for protection.

Answer the following questions, based on the passage above.

- (i) Select the option that explains the reason why the light in the inner room kept changing? 1
- (a) Because of the winds that were swaying the screen
 - (b) Because of the changing direction of the sun
 - (c) Because of the movement inside the room
 - (d) Because the screens were being repaired
- (ii) The writer would agree with the given statements based on paragraph eight, EXCEPT. 1
- (a) The elephant did not like being hit.
 - (b) The speaker was not amused by the water thrown by the elephant.
 - (c) The driver of the elephant did not want the elephant to run away.
 - (d) The driver of the elephant needed to rest.
- (iii) Share evidence from the text in about 40 words that the author had previously regarded riding on an elephant as a luxurious means of travel. 2
- (iv) Complete the sentence appropriately with an appropriate inference, with respect to the following. 1
- The writer has described the features of the elephant in paragraph 4 in order to highlight the.....
- (v) Select the option that means the same as 'moves', from the words used in Paragraph 2. 1
- (a) Interspersed (b) Matting (c) Glancing (d) Sways
- (vi) The writer did not enjoy the elephant ride. Based on your reading of the passage, list the reasons, in not more than 40 words, for such an attitude. 1
- (vii) In the line "...so, like the water buffalo, he wisely plastered himself with mud from the river's edge for protection" the author calls him wise. Explain in not more than 40 words. 2
- (viii) List two ways in which the Malay houses are appropriated for the region. 2
- (ix) What was the author's expectations regarding the elephant ride? 1
- (a) Exciting (b) Doubtful (c) Scornful (d) Prejudiced

Q.2 Read the passage given below:

1. A large majority of the elderly in India does not get long-term and palliative care, revealed study conducted for the United Nations. The survey of more than 10,000 respondents across Northern, Southern, Western, Eastern and Central India during May-June 2018, showed that 62.1% of the elderly did not get such care. More than half of these people, 52.4%, said they primarily need traditional family support, says a study by Age well Research and Advocacy Centre.
2. Older people in India often face problems such as disability, restricted mobility, loneliness, poverty and lack of awareness on accessing old-term care. With a fast growing population of older people, the ever-increasing gap between generations and the fast and demanding lifestyle of young people, for a majority of older people, life is still a struggle for independence.
3. "According to 64% of elderly respondents, loneliness, marginalisation and isolation are the most critical issues faced by bedridden, elderly patients as they cannot visit, meet or interact with their relatives, friends and neighbours," said Himanshu Rath, founder of Agewell Foundation.
4. The elderly have to compromise and make adjustments in their lifestyle according to the wishes of the younger members of their families to ensure they are cared for, the study revealed. It highlighted that 67.6% of the elderly being taken care of their family members have to look after the children of the families. They have to perform tasks such as babysitting in return for proper care and support.
5. "Around 73.7% said they have to take care of the house and other properties to their younger family members to ensure long-term and palliative care in old age the study report said." Over 75% of respondents have to limit their personal social interactions as their family members direct them to do so, otherwise their family "Most members can avoid providing their basic needs of food and medicines. elderly respondents (68.5%) said breaking up of the joint family system is one of the biggest factors for the challenges they face in getting long-term palliative care.
6. Healthcare equipment such as wheelchairs, relief material such as adult diapers and care-giving service should be provided on a regular basis to destitute older people, who are bedridden and suffering from acute mobility issues, the report said.

"Though providing long-term and palliative care to older persons Comes in the purview of family responsibilities in India, it is observed that older persons," (are financially independent, have a high net worth or hold property entitlements, are treated comparatively well by their family members" said Rath.

7. "Managing home care for the elderly is a massive challenge as multiple service providers nursing agencies, physiotherapists and medical suppliers-are small scale and unorganised and, therefore, provide incomplete care," he said. "In India, health insurance coverage is essentially limited to hospitalisation; the concept of geriatric care has remained a neglected area of medicine so far in the country."

Answer the following questions, based on given passage.

- (i) List two essential requirements for older people suffering from mobility issues. 2
- (ii) Select the option that displays the reason behind financially independent elderly being better off. 1
- (a) They have money to meet their financial needs.
- (b) They are treated with much more care and respect.
- (c) They are seen as one to be revered.
- (d) They have medical expenses.
- (iii) After reading the passage, what do you think is the primary need of all the elderly people in India? 1
- (iv) Complete the given sentence by selecting the most appropriate option. 1
- According to the study, long-term and palliative care comes under the purview of
- (a) Government responsibilities (b) liabilities (c) social responsibilities (d) Both (a) and (c)
- (v) Select the option that displays the most likely reason for stating that older people who live with family are no better. 1
- (a) They also suffer from loneliness (b) They have no one who loves or cares for them
- (c) They have additional burden of responsibility (d) All of the above
- (vi) Based on the reading of the text, state a point to challenge the given statement. Joint Family System along with the need for private space has brought challenges to the long term elderly care. 2
- (vii) Complete the given sentence with an appropriate inference from the last The concluding paragraph of the passage makes a clear case for..... 1
- (viii) State whether the given statement is True or False.
- In order to get proper case and support, the old people have to adjust their lifestyle as per the wishes of their children. 1

SECTION B: WRITING (18 Marks)

- Q.3 Attempt ANY ONE of the two, in about 50 words:** 4
- A.** You are the co-ordinator of Happy School, Dariyaganj, New Delhi. Write a **notice** informing the students about 'Mindfulness Camp' being organised in your school.
- B.** You are Roshini, the school captain of Oxford High School, New Delhi. Write a **notice** informing the students about Poem Recitation Competition to be held on 25th September. Give necessary details.
- Q.4 Attempt ANY ONE of the two, in about 50 words:** 4
- A.** The literary club of your school is putting up the play "Waiting for Godot". As secretary of the club, draft **an invitation** for the same. Write in about 50 words.
- B.** Your friend has invited you to attend the wedding of her brother, find that you have an important paper of pre-board examination on the day of the wedding. Thus, you cannot attend the event. Write in about 50 words an **informal reply** to the invitation expressing your regret. You are Geet/ Geeta Rastogi, 1/22, Anand Vihar, Bangalore.
- Q.5 Attempt ANY ONE of the two, in about 120-150 words:** 5
- A.** You are Rita/Rohan. Write a letter to **the Editor**, The Times of India, Lucknow, about your village which does not have a Primary Health Centre. The sick villagers have to travel a long distance for medical help. Many villagers have died due to lack of timely medical care. You can use the following clues.

Clues: None in close proximity, Time-consuming journey, many have lost lives
Need to open primary health clinics

B. You are Jagdish Rathore, a resident of 12/ 24, Karol Bagh, New Delhi. Write a **job application** along with your personal resume in 120-150 words in response to the following advertisement in a local daily.

Wanted an experienced Tennis Coach having B.P.Ed Degree for our school. Apply to the Principal, Welham Girls School, New Delhi by 10th October, 2024.

Q.6 Attempt ANY ONE of the two, in about 120-150 words:

5

A. You were a witness of a daring daylight bank robbery when you had gone to your bank for some personal work. Write a **report** on the incident with the help of the following clues. You are Maya Nautiyal/Mohit.

CLUES: Great Rush, Four men wearing masks, Telephone wire cut, Shout of threat, Fanning in the air, Ran away

B. Compulsory value-based education serves as a pre-emptive measure against the rising tide of crime. It creates a society where individuals understand the consequence of their action and the impact on others. Write an **article** in 120-150 words on the need of compulsory value-based education.

SECTION – C LITERATURE (40 Marks)

Q.7 Read the given extracts given below and answers the questions for ANY ONE of the TWO.

1x6=6

A. Spite of despondence, of the inhuman dearth
Of noble natures, of the gloomy days, Of all the unhealthy and o'er-darkened ways
Made for our searching: yes, in spite of all,
Some shape of beauty moves away the pall
From our dark spirits. Such the sun, the moon.

(i) Which of the following themes is best represented in the given extract?

- (a) The power of nature to uplift our mood. (b) The importance of perseverance.
(c) The immortality of art and literature. (d) The inevitability of death.

(ii) State whether the given statement is TRUE or FALSE, with reference to the extract.

The phrase "dark spirits" suggests a sense of sadness or emotional turmoil that people can experience during difficult times.

(iii) Complete the sentence appropriately. Some shape of beauty is an apt analogy for....

(iv) The word 'despondence' affects the tone of the poem by

(v) Identify the poetic device in the 'noble natures'.

- (a) Metaphor. (b) Paradox (c) Epigram. (d) Alliteration.

(vi) List the correct rhyme scheme of the extract.

B. Those who prepare green wars,
wars with gas, wars with fire,
victory with no survivors,
would put on clean clothes
and walk about with their brothers
in the shade, doing nothing. (Keeping Quiet)

(i) What does the phrase "victory with no survivors" mean?

- (a) The bloodshed caused by the result of wars.
(b) Nobody would be able to celebrate the victory of wars.
(c) Degradation of human life. (d) Both (a) and (b)

(ii) State whether the given statement is True or False, with reference to the extract.

Pablo Neruda mentions that fisherman fish for whales resulting in violence against the environment.

(iii) Which of the following, poetic devices has been used in 'clean clothes'?

- (a) Metaphor (b) Alliteration (c) Oxymoron (d) Assonance

(iv) Fill the blank with an appropriate word(s), with reference to the extract. The world presented in the given lines can be said to be

(v) What do 'green wars' refer to?

(vi) Identify the phrase from the extract that suggests the following. The poet does not promote inactivity or death but wants fraternity.

Q.8 Read the given extracts given below and answers the questions for ANY ONE of the two.

1x4=4

A. By the time I actually set foot on the Antarctic continent I had been travelling over 100 hours in combination of a car, an airplane and a ship, so, my first emotion on facing Antarctica's expansive white landscape and uninterrupted blue horizon was relief, followed up with an immediate and profound wonder. Wonder at its immensity, its isolation, but mainly at how there could ever have been a time when India and Antarctica were part of the same landmass

(i) What is the significance of Antarctic's 'expansive white landscape' and "uninterrupted blue horizon" to the author?

(ii) Choose the best synonym for 'profound'.

- (a) Wisely understood (b) Keenly managed (c) Sagely thoughtful (d) Deeply heartfelt.

(iii) Complete the given analogy correctly with a word.

Immensity: size: isolation:

(iv) Give one reason why the writing style of the extract can be called descriptive and reflective.

B. Yes, I've taken the obvious step: I talked to a psychiatrist friend of mine, among others. I told him about the third level at Grand Central Station and he said it was a waking dream wish fulfilment. He said I was unhappy. That made my wife kind of mad, but he explained that he meant the modern world is full of insecurity, fear, war, worry and all the rest of it and that I just want to escape. Well, who doesn't? Everybody I know wants to escape, but they don't wander down into any third level at Grand Central Station. (The Third Level)

(i) Why did the narrator go to a psychiatrist?

(ii) What is 'waking dream wish fulfilment' according to the psychiatrist in the lesson?

- (a) Charley's finding of a Third Level at Grand Central Station.
(b) Charley's realisation of his wish to visit Galesburg Illinois.
(c) Charley's escaping into his daydreaming every day.
(d) Charley's post stamp collecting habit.

(iii) Complete the sentence appropriately, with reference to the extract.

The third level, according to Charley, was.....

(iv) What does the psychiatrist explain to Charley?

Q.9 Read the given extracts given below and answers the questions for ANY ONE of the two.

6x1=6

A. The experience had a deep meaning for me, as only those who have known stark terror and conquered it can appreciate. In death there is peace. There is terror only in the fear of death, as Roosevelt knew when he said, "All we have to fear is fear itself." Because I had experienced both the sensation of dying and the terror that fear of it can produce, the will to live somehow grew in intensity. (Deep Water)

(i) How had the narrator experienced 'the sensation of dying and the terror that fear of it can produce'?

(ii) Complete the sentence with an appropriate explanation, as per the extract.

Roosevelt's opinion on fear is that.....

(iii) Based on the above extract, choose the statement that is TRUE for the speaker.

- (a) Douglas fear kept him away from going fishing.
(b) The fall in the pool at YMCA intensified Douglas fear.
(c) The fear of drowning resulted in Douglas' anxiety and terror.
(d) Douglas decided to practice to overcome his fear.

(iv) Identify the textual clue that allows the reader to infer that the writer has himself faced the terror.

(v) What was the impact of the 'experience' on the narrator's life?

(vi) Select the option that completes the given sentence appropriately.

The 'experience' in the context refers to

- (a) drowning in the YMCA Pool (b) learning how to swim
(c) swimming perfectly in various lakes (d) Both (b) and (c)

B. My acquaintance with the barefoot rag pickers leads me to Seemapuri, a place on periphery of Delhi yet miles away from it, metaphorically. Those who live here are squatters who came from Bangladesh back in 1971. Saheb's family is among them. Seemapuri was then a wilderness. It still is, but it is no longer empty. In structures of mud, with roofs of tin and tarpaulin, devoid of sewage, drainage or running water, live 10,000 rag pickers. (Lost Spring)

(i) What is the most logical reason for the author stating that Seemapuri is metaphorically very far away from Delhi?

(ii) Who lives in Seemapuri?

- Rag pickers (b) Immigrants (c) Bangle makers (d) People of Delhi

(iii) Rationalise, to support the given opinion.

The people of Seemapuri had come to India from Bangladesh for a better livelihood.

(iv) Identify the line from the extract which indicates that the inhabitants of Seemapuri are natives of Bangladesh.

(v) Who does author blame for the miserable conditions of rag pickers?

- (a) Government official (b) Private conglomerates (c) Celebrities (d) Both (a) and (b)

(vi) Complete the sentence appropriately.

The writer makes the given statements on the basis of

Q.10 Attempt ANY FIVE of the following six questions, in 40-50 words.

5x2=10

(i) Sahib's name had a great meaning which was quite ironical to him. Comment.

(ii) What do you think is the significance of the parting words of the poet and her smile? (My Mother at Sixty-Six)

(iii) How does the mood change when the ironmaster discovers the truth about the rattrap seller's identity?

(iv) What is the central message of the poem, 'Keeping Quiet' and how does it relate to the idea of stillness and silence?

(v) How did Rajkumar Shukla established that he was a resolute? (Indigo)

(vi) How did M. Hamel display his love for his language to the students?

Q.11 Attempt ANY TWO out of the three questions given below, in 40-50 words each. 2x2=4

(i) Do you think an author who induces several instance of satire in a story faces the risk of being too cynical? Explain. (The Tiger King)

(ii) Antarctica is unlike any other place on Earth. Justify the statement (Journey to the End of the World)

(iii) Why was Dr. Sadao not sent abroad along with the troops? (The Enemy)

Q.12 Answer ANY ONE of the following two questions in 120-150 words.

1x5=5

A. Imagine you are Pablo Neruda, the poet of "Keeping Quiet." What advice might you offer to Robert Frost, the poet of "A Roadside Stand", in the context of promoting understanding? Pen down your advice, in a letter to Frost.

You may begin this way:

Dear Robert

I recently read your poem, "A Roadside Stand," and

You may end this way.

I hope this advice is helpful to you. Please let me know if there is anything else I can do to support you.

Warmly,

Pablo Neruda

B. Both the story, "Deep Water" and "My Mother at Sixty-six" share a common theme of confronting fear and overcoming personal obstacles. You have been asked to address your peers and share the ways these portrayals highlight the unease and discomfort the characters feel.

Write a speech draft in 120 words.

Q.13 Answer ANY ONE of the following questions in 120-150 words.

1×5=5

A. Imagine you are the Maharaja of Pratibandapuram, also known as the "The Tiger King." Write a diary entry expressing your thoughts and feelings about the astrological prediction made about your life and your plan to defy it.

B. "The modern world, as has been said, is full of stress, anxieties and worries of innumerable things. In the face of these stresses, we want an escape as did Charley from the story The Third Level. Charley's escape, however, is the past."

You read the given lines in a journal. Write what you think about the given opinion. You can begin like this.

The modern world is full of fear, insecurity, war, worry and stress.
